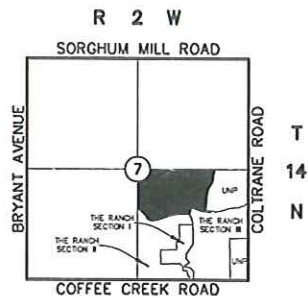


Lots Sold-Contracted



Location Map
SCALE: 1"=2000'

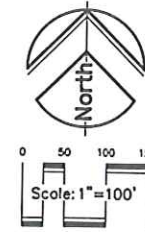
SUBDIVISION CONTAINS
FIFTY-SEVEN(57) LOTS IN FIVE(5) BLOCKS
AND NINE(9) RESERVES
GROSS SUBDIVISION AREA: 43.328 ACRES

OWNER:
The Ranch Property Co, L.L.C.
AN OKLAHOMA LIMITED LIABILITY COMPANY
2501 E. Coffee Creek Road
Edmond, Oklahoma 73034
Phone: (405)341-9933

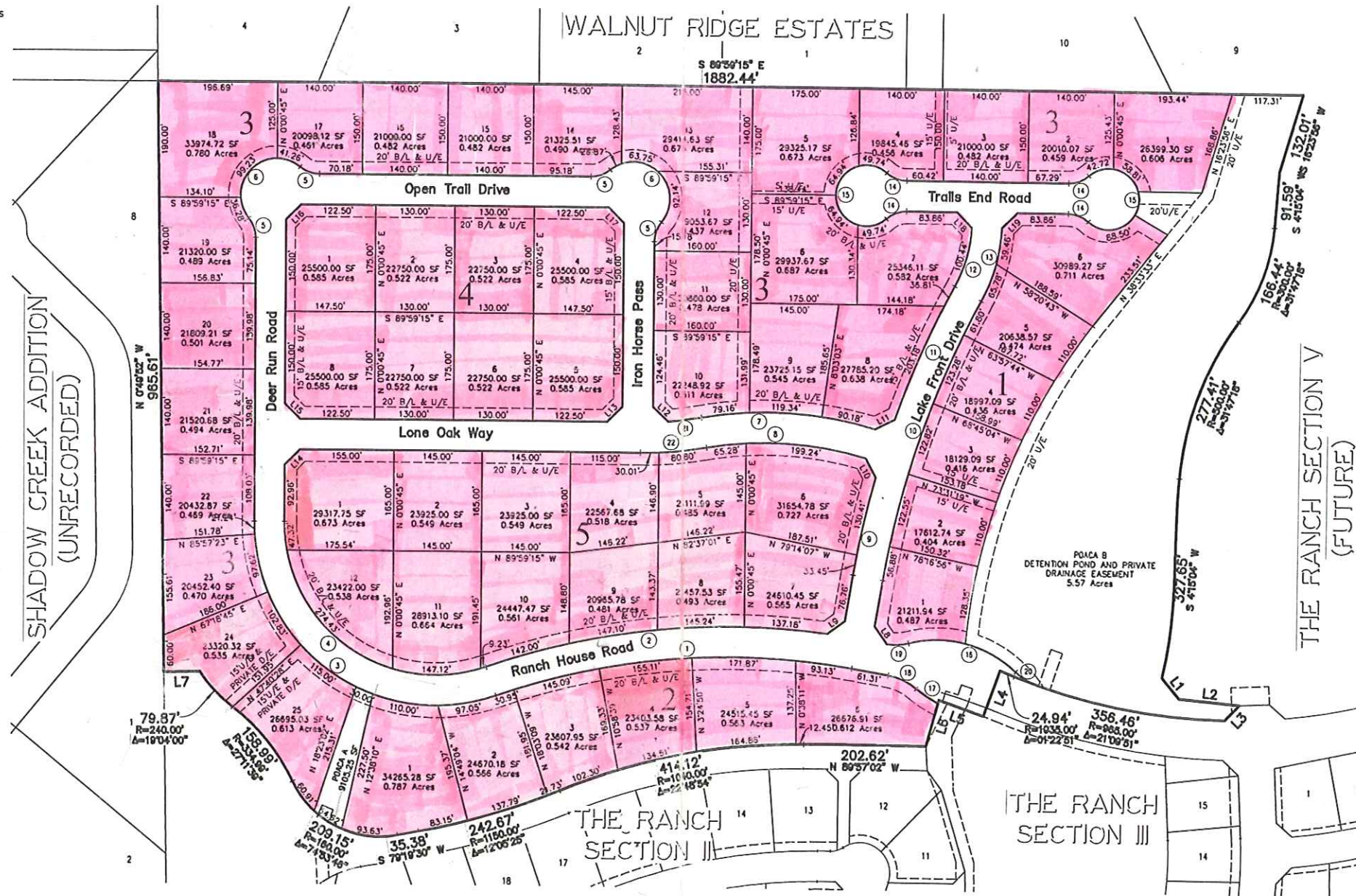
IRON HORSE RANCH IV

PART OF THE NORTH HALF OF THE SOUTHEAST QUARTER (SE/4)
OF SECTION 7, TOWNSHIP 14 NORTH, RANGE 2 WEST, INDIAN MERIDIAN.
AN ADDITION TO THE CITY OF EDMOND, OKLAHOMA COUNTY, OKLAHOMA

SURVEYOR:
Tanner Consulting, L.L.C.
DAN E. TANNER, P.L.S. NO. 1435
OK CA No. 2661, EXPIRES 6/30/2007
5323 South Lewis Avenue
Tulsa, Oklahoma 74105
Phone: (918)745-9929



ACC = ACCESS PERMITTED
LUA = LIMITS OF NO ACCESS
B/L = BUILDING LINE
U/E = UTILITY EASEMENT
MAE = MUTUAL ACCESS EASEMENT
ESWT = EASEMENT



50